

Square tape clamp **NEW**

Conductor size	Material	Weight each	Part No.
25 x 3mm	Copper	0.12kg	CT105-H
25 x 6mm	Copper	0.30kg	CT110-H
50 x 6mm	Copper	0.60kg	CT115-H

Manufactured from high quality copper and aluminium alloys. Simple to install, providing an effective low resistance connection between overlapping tapes to allow cross, tee, through and right angle joints to be formed.



BS EN 50164-1 Class H, BS 7430



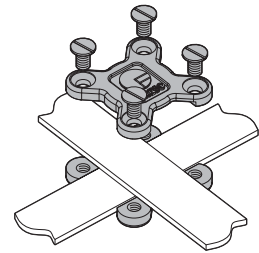
Fix using countersunk wood screws 1½" No. 10 or M6 (Part no. SW005 or SW105) and wall plugs (Part no. PS305) – see Accessories.



Tightening torque 5Nm



Reg. design



DC tape clip

Use with bare copper

Conductor size	Weight each	Part No.
20 x 3mm	0.06kg	CP205
25 x 4mm	0.07kg	CP216
30 x 5mm	0.10kg	CP227
38 x 5mm	0.12kg	CP245
40 x 4mm	0.14kg	CP241
50 x 4mm	0.15kg	CP256

Use with PVC covered copper

Conductor size	Weight each	Part No.
25 x 3mm	0.10kg	CP215
25 x 6mm	0.13kg	CP225
50 x 6mm	0.26kg	CP265

Use with lead covered copper

Conductor size	Weight each	Part No.
25 x 3mm	0.20kg	CP305

DC tape clips manufactured from high quality copper and aluminium alloys for excellent corrosion resistance and high pull off loads.



Pat. Pending



Swing lid DC tape clip – Use with bare copper

Conductor size	Weight each	Part No.
25 x 3mm	0.07kg	CP210-H NEW
25 x 6mm	0.08kg	CP220-H NEW



Fix using countersunk wood screws 1½" No. 10 or M6 (Part no. SW005 or SW105) and wall plugs (Part no. PS305) – see Accessories page 63.

Adjustable DC tape clip **NEW**

Use with bare copper

Conductor size	Weight each	Part No.
31 x 3mm and 31 x 6mm – use with bare copper	0.10kg	CP230-H
38 x 3mm, 38 x 6mm and 40 x 6mm – use with bare copper	0.12kg	CP240-H
50 x 3mm and 50 x 6mm – use with bare copper	0.16kg	CP260-H

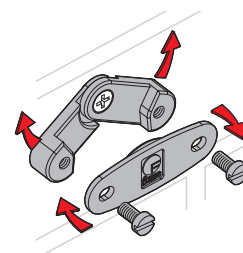
DC tape clips manufactured from high quality copper and aluminium alloys for excellent corrosion resistance and high pull off loads.

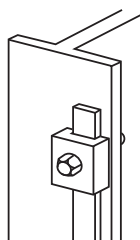


Fix using countersunk wood screws 1½" No. 10 or M6 (Part no. SW005 or SW105) and wall plugs (Part no. PS305) – see Accessories.



Pat. Pending





'B' bond

Maximum tape width	Bolt size	Conductor material	Weight each	Part No.
26mm	M10	Copper	0.12kg	BN105
26mm	M10	Aluminium	0.06kg	BN005
31mm	M10	Copper	0.15kg	BN113

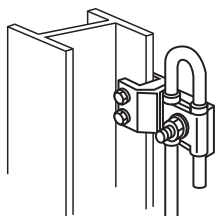
For bonding tape to steel structures.



BS EN 50164-1 Class H, BS 7430



Tightening torque 17Nm



Metalwork bond

Conductor diameter	Conductor material	Weight each	Part No.
8mm	Copper	0.37kg	CS350
8mm	Aluminium	0.17kg	CS355

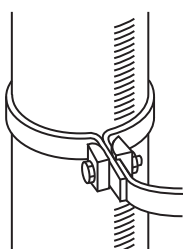
For connecting to all types of metal structures up to 13mm thickness.



BS EN 50164-1 Class H, BS 7430



Tightening torque – M8 bolt: 10Nm, M10 bolt: 12Nm



RWP bond

Maximum tape width	Bolt size	Conductor material	Weight each	Part No.
26mm	M10	Copper	0.12kg	BN115
26mm	M10	Aluminium	0.07kg	BN010

For bonding tape to rainwater pipes, handrails etc.



BS 7430

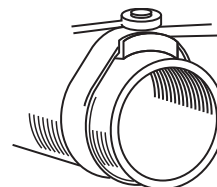
Watermain bond

Maximum tape width	Conductor material	Weight each	Part No.
26mm	Copper	0.26kg	BN120

For bonding tape to large diameter pipes.



BS 7430



Pipe bond

Conductor diameter	Pipe diameter	Conductor material	Weight each	Part No.
8mm	50 – 200mm	Copper	0.46kg	BN175
8mm	50 – 200mm	Aluminium	0.25kg	BN176

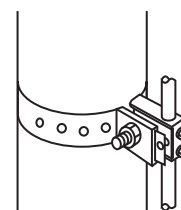
For bonding to ducts and large diameter pipeworks.



BS EN 50164-1 Class H, BS 7430

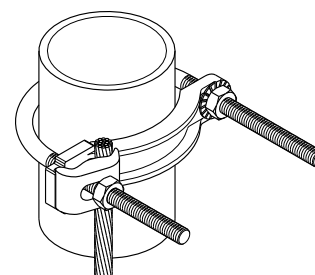


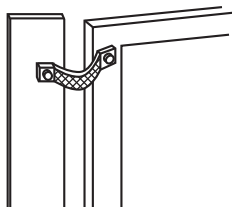
Tightening torque – M6 bolt: 6Nm, M10 bolt: 12Nm



Pipe clamp

Pipe diameter	Conductor range	Weight each	Part No.	
½" – 1"	13 – 25mm	25 – 95mm ²	0.3kg	3902
1¼" – 2"	32 – 50mm	25 – 95mm ²	0.4kg	3903
2½" – 3½"	65 – 90mm	25 – 95mm ²	0.5kg	3904
4" – 5"	100 – 125mm	25 – 95mm ²	0.6kg	3905-TB
6"	150mm	25 – 95mm ²	0.8kg	3906-TB
8"	200mm	25 – 95mm ²	1.0kg	3907
10"	250mm	25 – 95mm ²	1.1kg	3908
12"	300mm	25 – 95mm ²	1.5kg	3909-TB





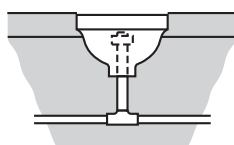
Flexible copper braid bond

Overall braid dimensions	Hole size	Hole centres	Weight each	Part No.
25 x 3.5mm	11mm	200mm	0.09kg	BN505
25 x 3.5mm	11mm	400mm	0.15kg	BN510

Flexible copper braid for bonding gates, doors, fences etc. Equivalent cross sectional area 35mm². Other materials, lengths and sections available as special items.



BS 7430



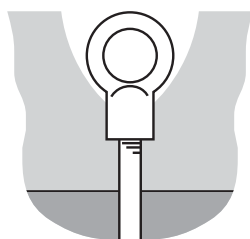
Static earth receptacle

Conductor material	Weight each	Part No.
Copper	0.64kg	RX005

For setting into roadways or runways. Provides a static discharge point for aircraft, fuel tankers, etc.



BS 7430



Eyebolt

Nominal copperbond rod diameter	Weight each	Part No.
5/8"	0.52kg	BT150
3/4"	0.52kg	BT160

Screws direct onto a copperbond earth rod, offering an earth point for boats, trucks etc.



BS 7430

Straight setscrew type cable socket

Conductor diameter	Palm hole diameter	Conductor material	Weight each	Part No.
8mm	12mm	Copper	0.11kg	SX450
8mm	12mm	Aluminium	0.05kg	SX455

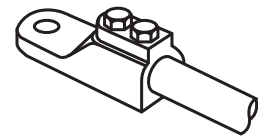
For bonding copper and aluminium conductors to steel work.



BS EN 50164-1 Class H



Tightening torque 3Nm



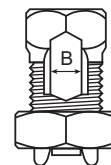
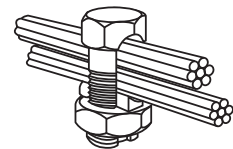
Type H – High strength splitbolt connector

Conductor range				Dimension B	Weight each	Part No.
Main		Tap				
Min	Max	Min	Max			
4mm ²	10mm ²	2.5mm ²	10mm ²	4.1mm	0.02kg	8H-FU
10mm ²	16mm ²	2.5mm ²	16mm ²	5.5mm	0.03kg	4H-FU
16mm ²	25mm ²	4mm ²	25mm ²	6.9mm	0.04kg	2H-FU
25mm ²	35mm ²	4mm ²	35mm ²	8.4mm	0.06kg	1H-FU
35mm ²	50mm ²	4mm ²	50mm ²	9.7mm	0.09kg	10H-FU
35mm ²	70mm ²	4mm ²	70mm ²	11.2mm	0.14kg	20H-FU
50mm ²	95mm ²	4mm ²	95mm ²	13.6mm	0.17kg	30H-FU
50mm ²	120mm ²	6mm ²	120mm ²	14.7mm	0.18kg	40H-FU
95mm ²	185mm ²	6mm ²	185mm ²	18.2mm	0.35kg	350M-FU

For copper to copper connections. No special tools required.



BS 7430



Rebar clamp

Conductor diameter	Rebar diameter	Conductor material	Weight each	Part No.
8mm	8 – 18mm	Copper	0.32kg	BN150
8mm	18 – 38mm	Copper	0.75kg	BN155

For bonding to reinforcing bars, steam pipes, handrails etc.



BS 7430

